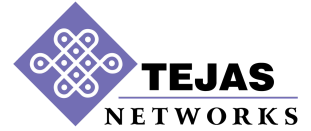
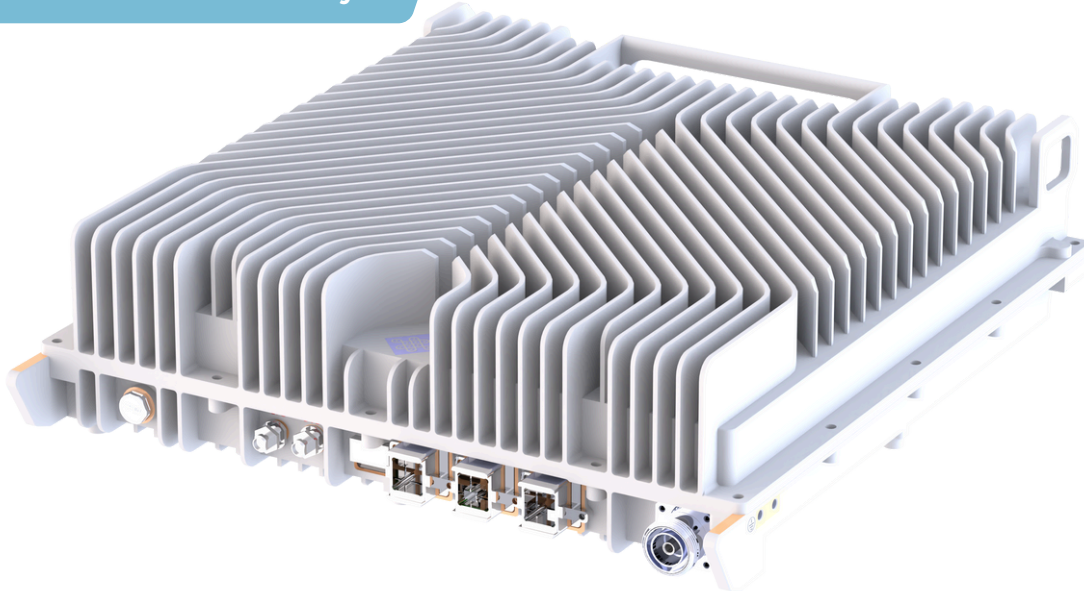


Broadcast Radio Head (BRH)



Industry's First Standard-Compliant
Low-Power BRH
Redefining Next-Gen Content Delivery



Tejas Broadcast Radio Head (BRH) enables scalable network topology for delivering Next-Gen Digital Terrestrial Transmission (DTT).








Supported Deployment Scenarios:

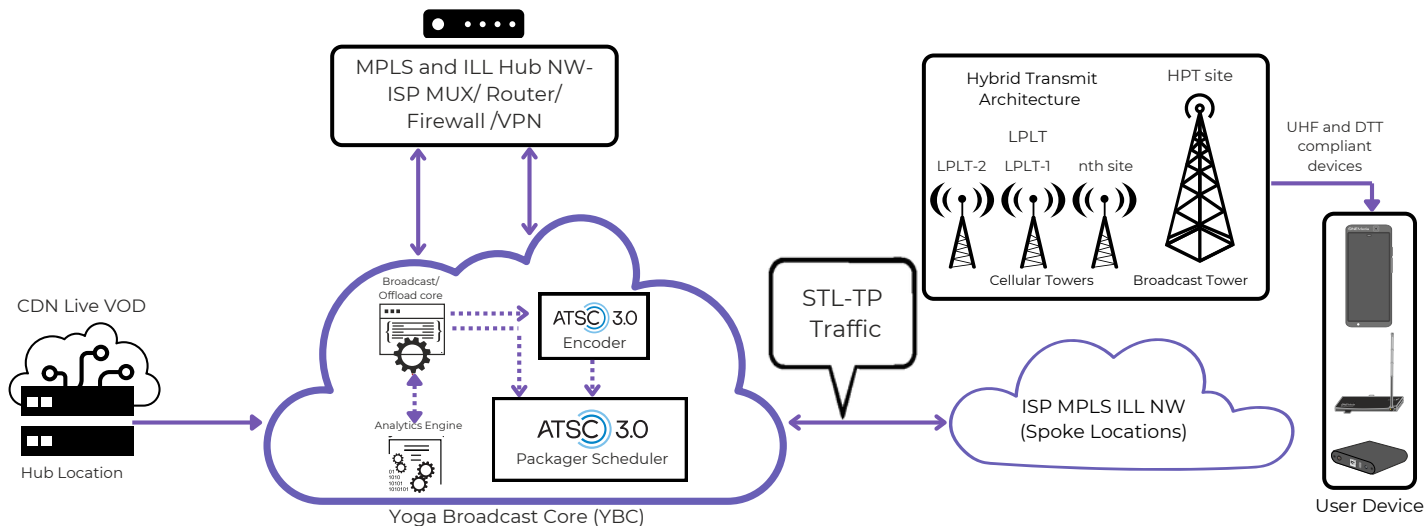
1. Gap-filler
2. SFN with High Power TV Transmitter or Low Power TV Transmitter
3. MFN
4. D2M - Direct To Mobile (Low Power Low Tower)

- Easy to install on a pole or on a telecom tower.
- Cooling by natural convection.
- Remote Management System with FCAPS capability.
- Remote Software Upgrade Management.

BRH can be deployed as part of the Direct to Mobile (D2M) Broadcast solution. This solution reduces congestion in the mobile network by offloading high viewership congestion causing content from cellular networks to a hybrid broadcast network.

Use Cases

-  Live & OTT Content Broadcast
-  CDN Offload
-  Personalized Ads based on user viewing history & preferences
-  Remote Education without broadband
-  Broadcast Positioning System(BPS): Terrestrial backup to GPS for Positioning Navigation & Timing
-  Emergency Alerts & Notifications
-  Sensing/Distributed Radar like applications



Technical Specifications

| | |
|------------------------------|--|
| Broadcast Standards | ATSC 3.0 ATSC 1.0, ISDB-T, FeMBMS and DVB T2 (on Request) |
| Broadcast Specification | |
| Bandwidth | 6 MHz, 7 MHz, 8 MHz |
| Maximum Conducted Power | 40 W |
| Data Rate | 6 MHz - Up to 25 Mbps; 8 MHz Up to 33 Mbps |
| MER | > 36 dB |
| Interface | |
| Backhaul | Ethernet 1 Gbps RJ45, Satellite (DVBS/DVB-S2) |
| | Fiber Optic Ethernet (SFP 1 Gbps) |
| RF | UHF Frequency Band 470-608 MHz |
| Device Management | |
| EMS | Centralized with Remote Software Upgradability |
| Reporting | System usage statistics reporting |
| Software Upgrades | Remote and scheduled software upgrades |
| Compliance | |
| Regulatory Compliance | FCC Title 47CFR 74.794 and Part 15 |
| Mask Filter | Simple mask, full mask |
| Physical Specifications | |
| Dimensions (in mm) L x W x D | 401 x 411 x 117 |
| Weight | 16.5 kg |
| Power Consumption | 270 W |
| Power Input | -48 V DC |
| Model No. | TJBRH40W |



HQ: Bangalore, India

New Delhi | Gurgaon | Mumbai | Kolkata | Chennai

www.tejasnetworks.com | +91-80-4179-4600

info@tejasnetworks.com

| | |
|--------------|------------|
| USA | UAE |
| UK | MALAYSIA |
| KENYA | SINGAPORE |
| SOUTH AFRICA | MEXICO |
| NIGERIA | BANGLADESH |
| ALGERIA | |